



## Court Modular Panel

A stable foundation combined with a high-performance play surface is the industry's first all-in-one, easy-to-install economical court solution. Install in a day, play for a lifetime.

	Dimensions	30" x 30" x 1.25" (10.2 lbs.) Usable Dims: 28" x 28" x 1.25" 5.44 sq. ft.
	Vertical Drainage	424.5 inches per hour
	Horizontal Drainage	12.1 inches per hr
	Load Capacity	Exceeds 500 lbs. per sq. in
	Do It Yourself	Quick install in hours not days.
	Construction	Textured surface. Built-in Vertical and Horizontal Drainage. Support ribs creating a stable foundation.
	Recyclable	Made from 100% Recyclable material.
	Warranty	Limited Lifetime Warranty

- Maximum Drainage**  
Permeable Design allows for moisture to drain meeting most county codes of ordinance
- Economical Choice**  
Most cost effective option compared to pouring concrete
- Portable**  
Modular design allows panels to be moved after installation.

- Drainage
- Value
- Portability

Learn more at [ultrabasesystems.com.com](http://ultrabasesystems.com.com)

Recommended Uses:

- Futsal
- Basketball
- Volleyball
- Multi-Sport

### Additional Facts:

Locking System

16 interlocking teeth ensure perfect alignment from panel to panel.

Nonslip Surface

Textured surface to promote greater traction.

Installing Over Uneven Terrain

Designed to follow the contours of uneven terrain.

Materials

Proprietary blend of Polypropylene and other materials

### Available Colors:



Charcoal Gray



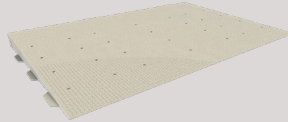
Putty



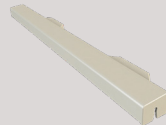
Willow Green

**A** Accessories available in all colors

### Accessories:



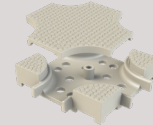
ADA Ramp



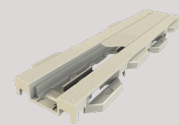
Edge Trim



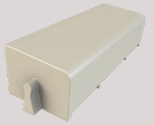
Corner Trim



Covered Wire Chase Junction Box



Covered Wire Chase



Wire Chase Finished Edge

