

Court Foundation Modular Panel

Ultra Base Court Foundation Panel is used as a concrete or asphalt replacement base when covering with a variety of materials such as VersaCourt game tiles.

	Dimensions	30" x 30" x 1.25" (10.2 lbs.) Usable Dims: 28" x 28" x 1.25" 5.44 sq. ft.
	Vertical Drainage	424.5 inches per hour
	Horizontal Drainage	12.1 inches per hr
	Load Capacity	Exceeds 500 lbs. per sq. in
	Do It Yourself	Quick install in hours not days.
	Construction	Textured surface. Built-in Vertical and Horizontal Drainage. Support ribs creating a stable foundation.
	Recyclable	Made from 100% Recyclable materials.
	Warranty	Limited Lifetime Warranty



Versatile

Concrete or asphalt alternative for covering with a variety of materials



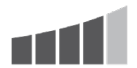
Economical Choice

Most cost effective option compared to pouring concrete



Portable

Modular design allows panels to be moved after installation



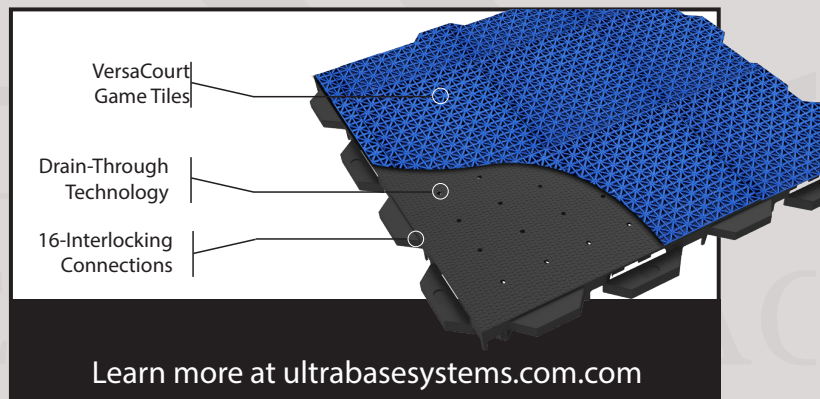
Versatility



Value



Portability



Recommended Uses:



Subfloor



Basketball



Volleyball



Multi-Sport

Additional Facts:

Locking System	16 interlocking teeth ensure perfect alignment from panel to panel
Profile	Non-slip play surface with drainage holes
Cleaning	Leaf blower or Pressure washer
Materials	Proprietary blend of Polypropylene and other materials

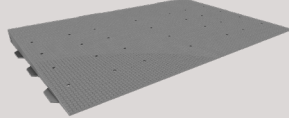
Available Colors:



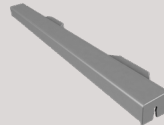
Black

A Accessories available in all colors

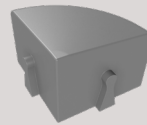
Accessories:



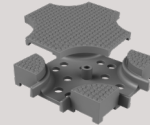
ADA Ramp



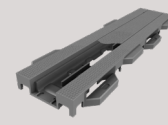
Edge Trim



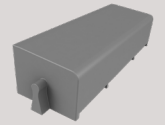
Corner Trim



Covered Wire Chase Junction Box



Covered Wire Chase



Wire Chase Finished Edge